

**Motor 14b - CHERRY 12:1 and 24:1 GEARBOXES**

E3-A. Drg 14b 9/85

Both boxes come fitted with a Sagami 28401 motor.

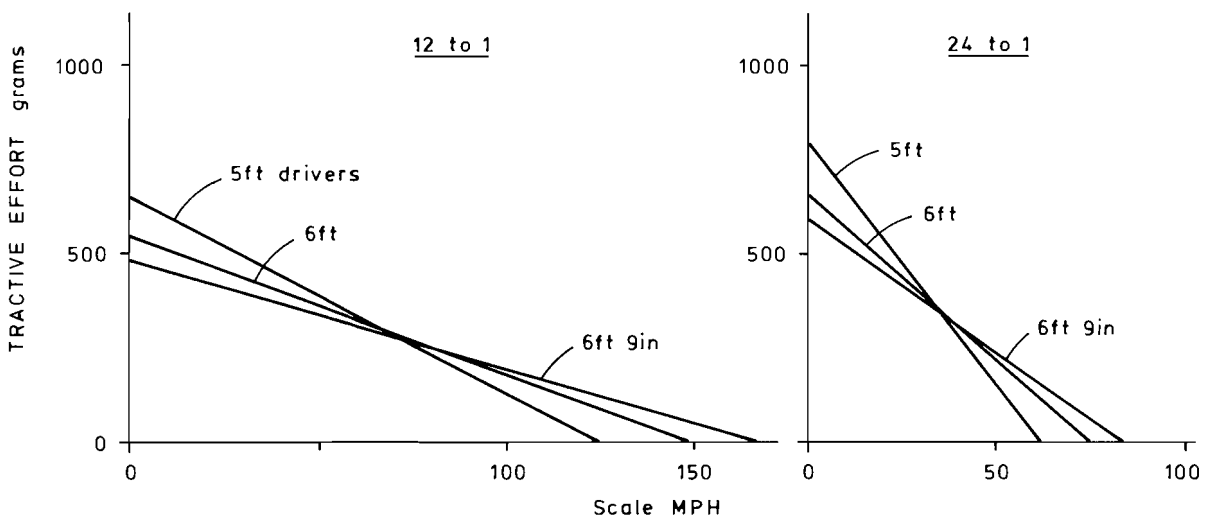
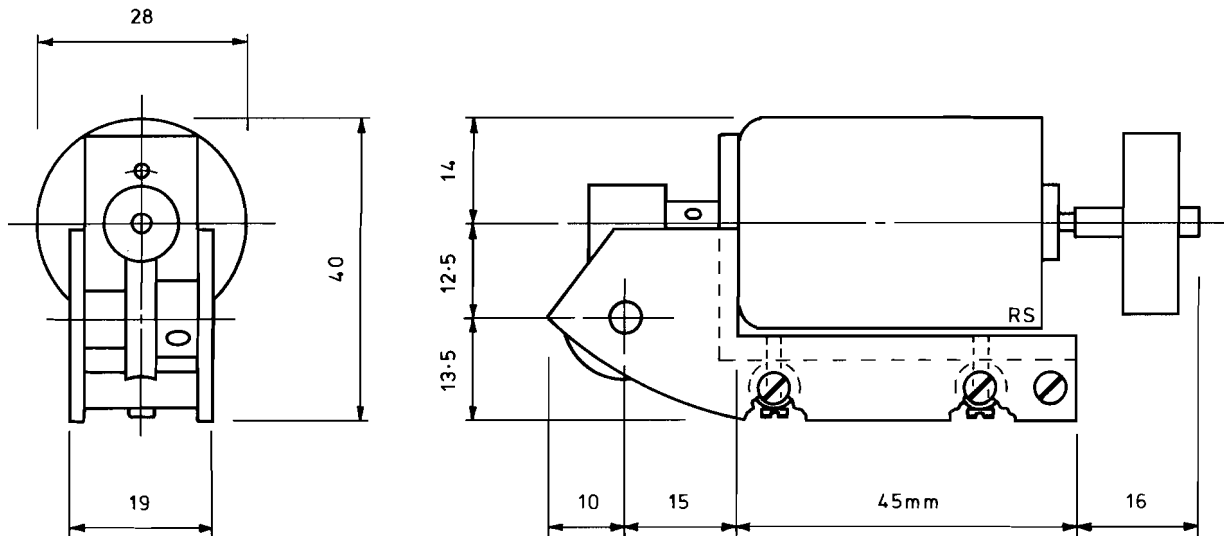
Motor details: Nominal voltage - 12 volts. No load speed - 8300 rpm. Stall current - 2.1 amps. Maximum continuous speed - 6300 rpm. Stalled torque - 288 gram cm.

Gearbox details	12:1	24:1
Efficiency	33%	20%
Maximum recommended driving axle speed rpm	525	262.5

Comment: The 12:1 gearbox gives adequate haulage capacity and speed range for mixed traffic and express locomotives. The 24:1 gearbox gives a good tractive effort with a relatively low top speed suited to most of the medium to large freight locomotives.

Data source: Manufacturer's data sheets.

Available from Cherry Scale Models, 25 Oakham Road, Whissendine, Oakham, Leicester, LE15 7HA.



**Motor 14c - CHERRY 18:1 and 36:1 GEARBOXES**

E3-A. Drg 14c 9/85

Both boxes come fitted with a Sagami 28401 motor.

Motor details: Nominal voltage - 12 volts. No load speed - 8300 rpm. Stalled current - 2.1 amps. Maximum continuous speed - 6300 rpm. Stalled torque - 288 gram cm.

Gearbox details:	18:1	36:1
Efficiency	30%	18%
Maximum recommended driving axle speed rpm	350	175

Comment: The 18:1 gearbox has a good haulage capacity and speed range for both freight and express locomotives. The 36:1 gearbox has a low top speed but a high tractive effort suitable for the most powerful freight locomotives.

Data source: Manufacturer's data sheets.

Available from Cherry Scale Models, 25 Oakham Road, Whissendine, Oakham, Leicester, LE15 7HA.

